

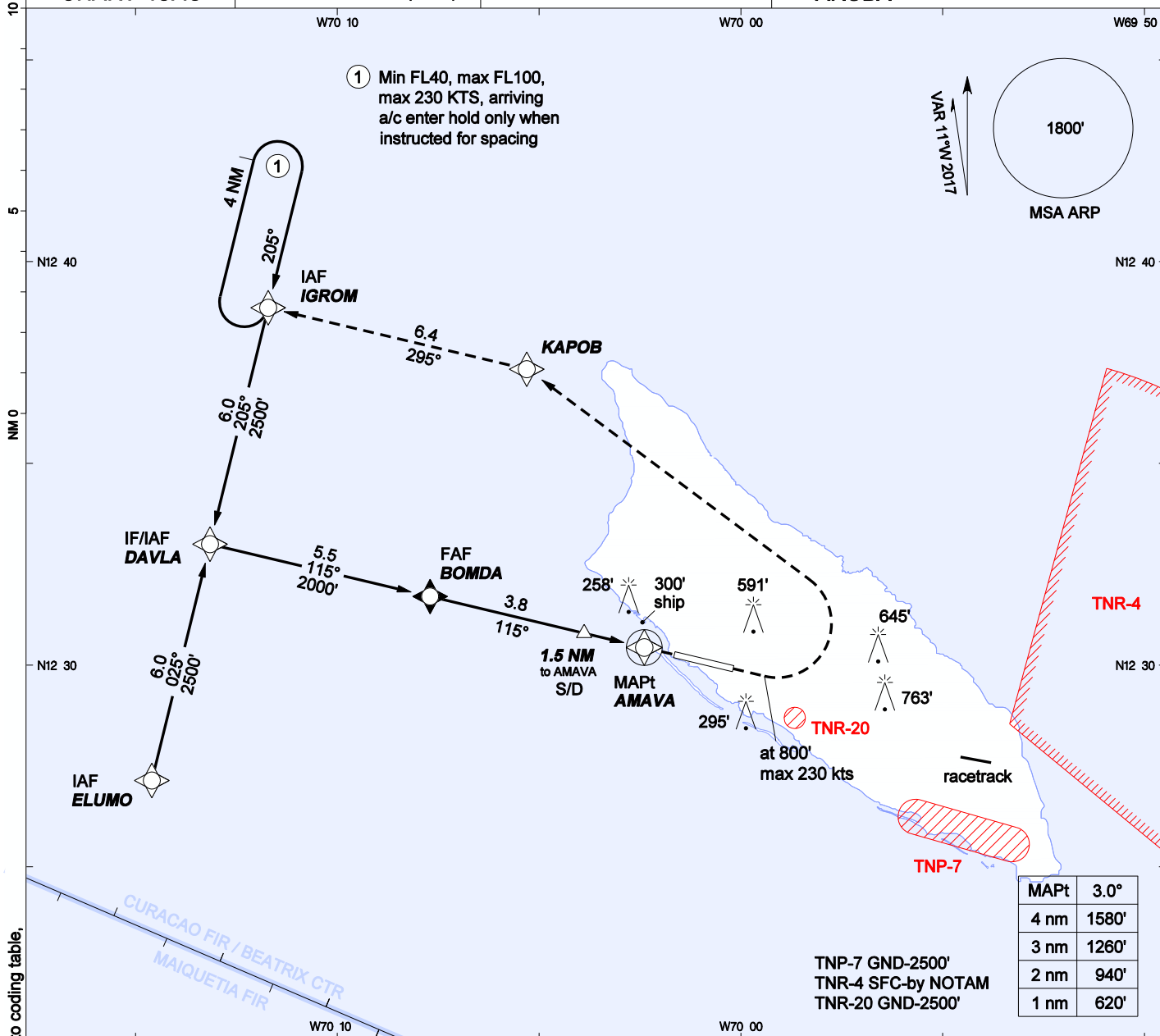
AIP DUTCH CARIBBEAN

INSTRUMENT APPROACH CHART - ICAO

AD ELEVATION: 62'
TRANS LEVEL: FL 40
TRANS ALT: 2500' (2438')

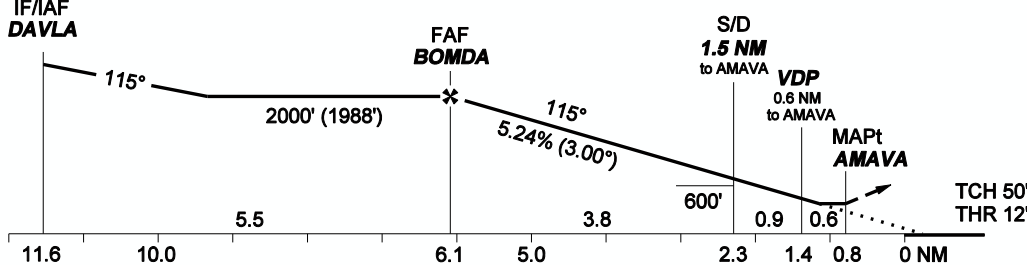
BEATRIX:
APP/TWR 120.9 GND 118.0
APRON 121.6 ATIS 132.1

**RNAV (GNSS) RWY 11
REINA BEATRIX INT'L (TNCA)
ARUBA**



CHANGES: IGROM holding, missed approach, stepdown fix coordinates added to coding table.

MISSED APPR: Climb on extended centerline to 800', then turn left climbing to FL40 direct to KAPOB, then to IGROM and hold, or as directed by ATC. MAX 230 KIAS through first turn.



OCA(H)	A	B	C	D
LNAV/VNAV	440' (428')	440' (428')	440' (428')	440' (428')
LNAV	510' (498')	510' (498')	510' (498')	510' (498')
CIRCLING	890' (828')	890' (828')	1160' (1098')	1160' (1098')

GROUNDSPEED - DESCENT RATE						
KNOTS	70	90	100	120	140	160
FT/MIN	372	478	531	637	743	849

- GNSS required.
- Pilots should request RNAV approach on first contact with Beatrix tower.
- For uncompensated BARO-VNAV systems, LNAV/VNAV not authorized below 0° C.
- Bearings are magnetic. Altitudes, elevation and heights in feet and distance in NM.
- Straight-in heights are relative to THR elevation, all other heights are relative to AD elevation.
- Visual descent point (VDP) is where LNAV OCA intersects 3° descent slope.

- Fly-by on demand reporting
- Fly-by compulsory reporting
- Fly over on demand reporting